



ACOUSTIC CEILINGS

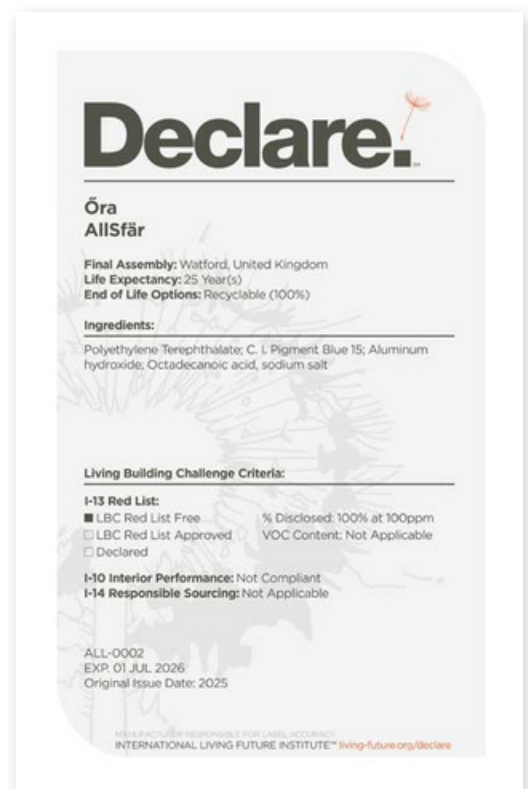
Vault Wall

Acoustic Wall Solution

Our latest innovative acoustic wall solution takes inspiration from Romanesque architectural elements but simplified for today's built environments making it easy for interior designers and architects to create statement walls whilst managing acoustics.

The range of options, sizes and colours allows interior designers to flex their creativity and use Vault across both ceilings and walls.

There are two sizes of Vault arch available and the option to add end caps will help create a truly seamless finish.



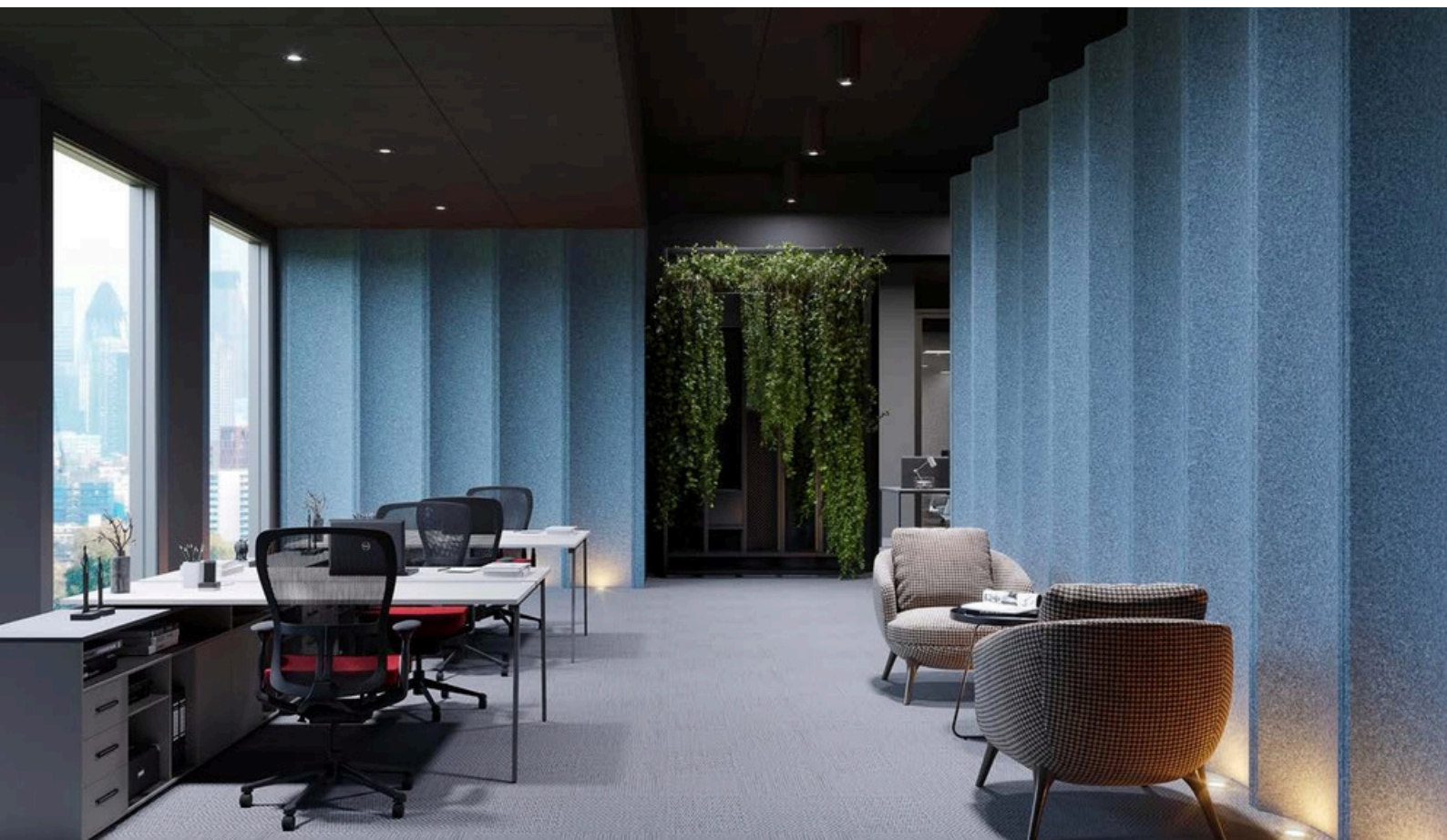
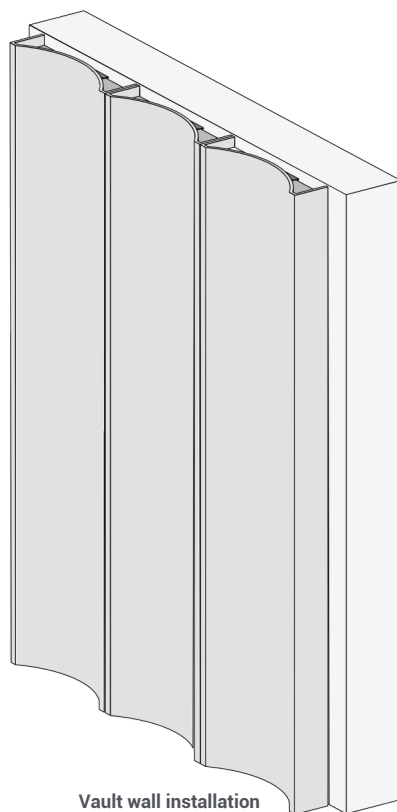
FEATURES

- ▶ Romanesque arch design for statement walls
- ▶ Clips easily to existing ceiling grids
- ▶ Alternative mounting options available for walls
- ▶ Lightweight for easy installation
- ▶ Easily removable for access to services
- ▶ Half arch and full arch sizes available
- ▶ Stylish end caps available to create a seamless look
- ▶ Available in over 40 nature-inspired colours
- ▶ Created in-house delivering fast lead times and complete creative control
- ▶ Made using GRS-certified fibres containing 99% recycled content
- ▶ No formaldehyde binders
- ▶ Low VOCs
- ▶ LBC Red List Free
- ▶ Not affected by moisture, mould or mildew
- ▶ EN 13501-1:2018-B, s1, d0; ASTM E84 -16 - Class A



Wall Panel

CODE	DESCRIPTION	OVERALL SIZE
VLT-W143	Small	2400mmL x 600mmW x 143mmD
VLT-W300	Large	2400mmL x 600mmW x 300mmD





ÖRA COLOURS*

CARDINAL RED	ROBIN RED FLECK	ORIOLE ORANGE	ORIOLE ORANGE FLECK	FLAMINGO PINK	CHAFFINCH CORAL	SISKIN YELLOW	CANARY YELLOW	CANARY YELLOW FLECK	LARK MUSTARD FLECK
WOODPECKER GREEN	WOODPECKER GREEN FLECK	GOLDCREST GREEN FLECK	TURACO OLIVE GREEN	WARBLER SAGE GREEN	PEACOCK TEAL FLECK	MALLARD TEAL	SWALLOW DARK BLUE	JACARINA BLUE FLECK	SABREWING PURPLE FLECK
KINGFISHER BLUE FLECK	OWL DARK BEIGE FLECK	WHEATEAR BEIGE	WHEATEAR BEIGE FLECK	SANDERLING GREY	DOLLARBIRD BLUE GREY FLECK	HERON GREY	SKUA GREY	RAVEN BLACK	DOVE WHITE

REJUVENATE PALETTE



REFINE PALETTE



REFRESH PALETTE



* Please include felt colour when ordering.

Care Instructions

Our products are extremely durable and require little attention to maintain their good looks. Light dusting on a regular basis will prevent dust build up and most marks can be cleaned with a mild detergent solution followed by rinsing and blotting. Stains should be dealt with according to the chart below.

Before carrying out a proposed cleaning method, apply to a concealed section to ensure it will not affect the product or adhesive. Avoid cleaning methods that create severe abrasion. NB: Solvent and mineral based cleaners should be used sparingly to avoid possible degradation of the adhesive adhering the product to the substrate.

Professional Cleaning Methods

Stain	Treatment Guide
Blood	A, C
Burn/Scorch Mark	K
Chewing Gum	I, B, D, C
Chocolate	B, D, C
Cooking Oils	B, D, C
Crayon/Colour Markers	B, D, C
Drinks	A, C
Dust/Dirt	Vacuum, then J or C
Excrement	B, C
Grass	C
Grease	B, D, C
Ink (ballpoint)	D, E
Ink (fountain)	A, C
Lipstick	B, E, C, D
Mildew	C
Milk	A, E
Mud	B, C
Nail Polish	A, G
Oil	B, D, C
Paint (water based)	A, F, C
Paint (oil based)	A, H, D, C
Sauces	B, C, D
Shoe Polish	B, C, D
Urine	A, C
Vomit	A, C, D
Wine	A, Add Salt, C

Key

- A** Mop up excess as soon as possible with a sponge or cloth.
- B** Remove surplus with a knife edge or appropriate instrument.
- C** Sponge with a solution of carpet shampoo working from well outside the stain in a circular motion towards the centre (this avoids spreading the stain). Sponge afterwards with clean warm water and mop excess moisture with a clean dry cloth or sponge. Allow to dry then brush gently with a soft brush. If any stain remains, sponge with a solution of one part household bleach to six parts clear water. Thoroughly rinse after treatment.
- D** Lightly sponge with household dry cleaning fluid and blot. Apply sparingly, as the substance may have an adverse effect on the adhesive.
- E** Sponge with methylated spirits and blot dry.
- F** Lubricate the stain with glycerine or petroleum jelly.
- G** Apply nail polish remover. The nail polish remover should not include lanolin or be of a greasy nature.
- H** Sponge with turpentine (or substitute).
- I** Freeze with ice cubes and scrape away while cold.
- J** Clean with regular extractive carpet cleaner (if possible).
- K** Use circular cutter and remove damaged portion. Re-glue new piece into place.

Please contact us for a detailed installation guide.

Showroom: 14 Baltic Street East, London, ECIY 0UJ

Head Office and Factory: Aspect Gate, 1 Olds Approach, Watford, WD18 9RF

www.allsfar.com • +44 (0)20 3889 9888 • hello@allsfar.com

