



ACOUSTIC CEILINGS

Stratus

Modular acoustic ceiling system

Stratus is a unique new modular, continuous ceiling system, designed based on mounting from the conventional suspended false ceiling T-grid.

Stratus comes in a range of different depths and with four different tiles caps that can be used in one installation making it easier than ever to create beautiful statement ceilings whilst managing acoustics.

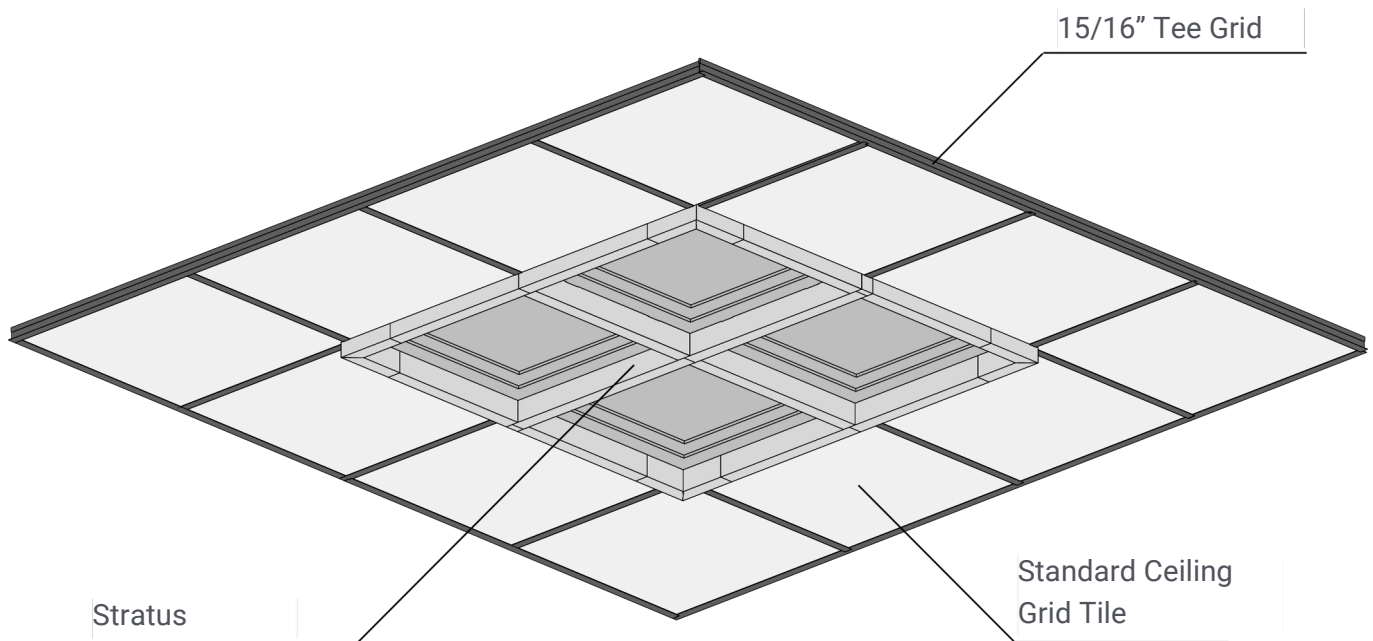
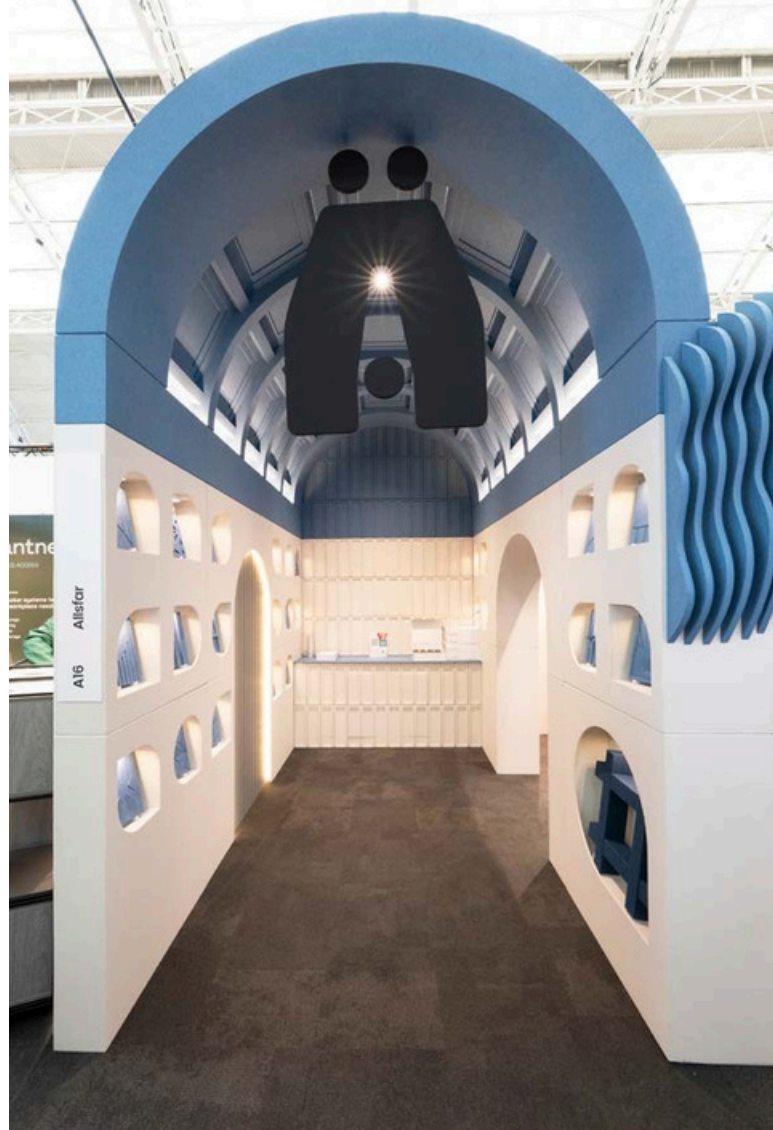
Designers can create ceilings with texture and visual interest by using the same standard pieces at different depths and can be installed either

wall to wall or in just one key ceiling section, for example above a board room table. The system can be easily retrofitted into an existing 15/16" T-grid and can be secured onto a standard ceiling grid without glue, or screws (apart from the edge trims), and can be easily cut to accommodate light fittings and/or existing vents.

Stratus is a truly versatile option as designers can mix and match colours and woodgrain finishes to reflect existing soft-furnishings and scheme colour palettes to create something very unique.

FEATURES

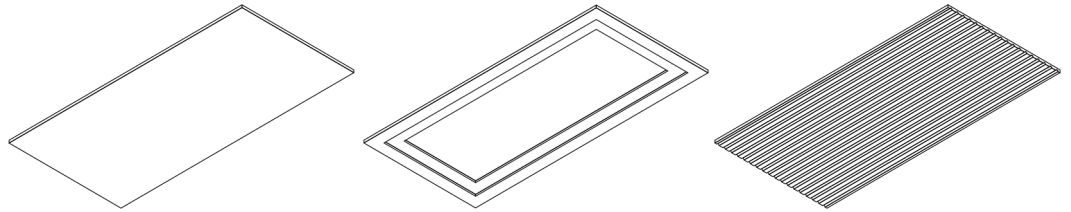
- ▶ Innovative modular acoustic ceiling system
- ▶ Designed and manufactured in the UK
- ▶ Made using GRS-certified fibres containing 99% recycled content
- ▶ Versatile – can be configured to fit any space
- ▶ Create dynamic ceilings by combining standard pieces in different depths and four tile caps designs
- ▶ Unique way to manage acoustics and create a visual statement on the ceiling
- ▶ Available in realistic wood finishes and our 40+ nature inspired colours
- ▶ No formaldehyde binders
- ▶ Low VOCs
- ▶ Easily retro-fitted to ceilings
- ▶ Easily cut to accommodate light fittings and vents
- ▶ Can be installed wall to wall or used to create smaller zones
- ▶ EN 13501-1:2018-B, s1, d0; ASTM E84 -16 - Class A



THREE EASY STEPS TO SPECIFY STRATUS

- 1** CHOOSE YOUR BEAM DEPTH **2** CHOOSE YOUR TILE CAP **3** CHOOSE YOUR COLOUR OR SENSE WOODGRAIN FINISH

600mm X 1200mm:



"Sense" woodgrain Product Code:
Colour Product Code:

SS-TP 600 1200
S-TP 600 1200

S -TCL600 1200

ST-TL 600 1200

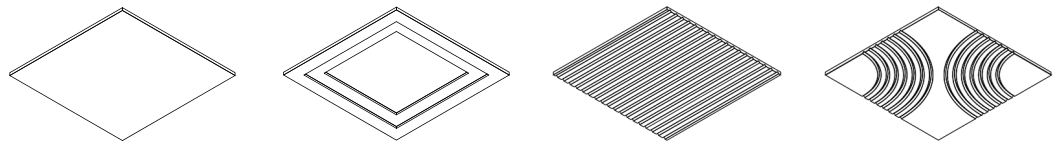
Tile Design:

Plain

Classic

Linear

600mm X 600mm:



"Sense" woodgrain Product Code:
Colour Product Code:

STS-TP 600 600
ST-TP 600 600

ST-TCL 600 600

ST-TL 600 600

S -TC 600600

Tile Design:

Plain

Classic

Linear

Curve

Supplied flat pack (simple universal assembly to supplied Installation guide).
Fits to standard T24 ceiling grids.
Beam components supplied to suit your ceiling configuration.
Tiles supplied in packs of 8No 600x600mm or 4No of 600x1200mm (Single colour per pack).
Please enquire for any special unlisted requirements.

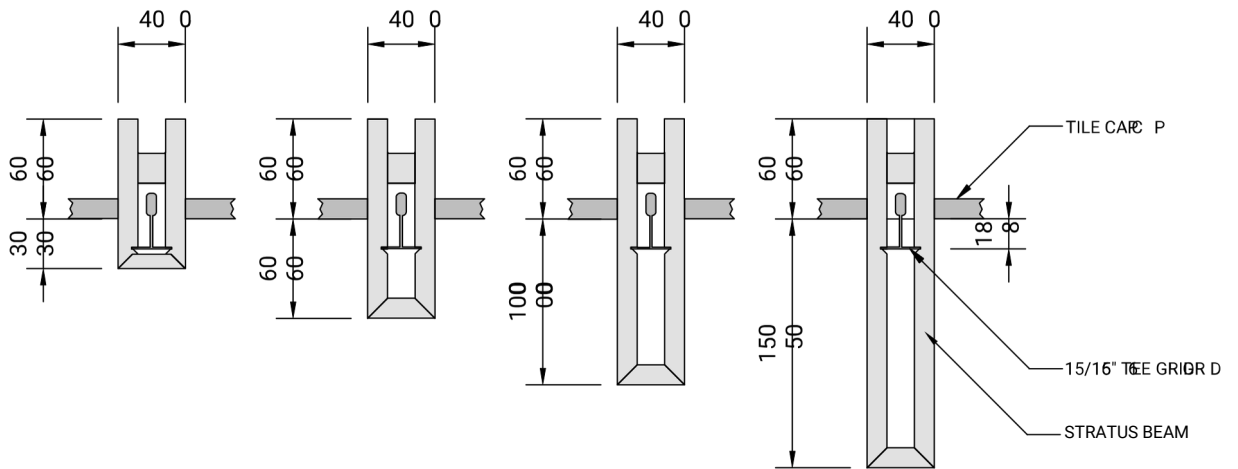
Product Code:

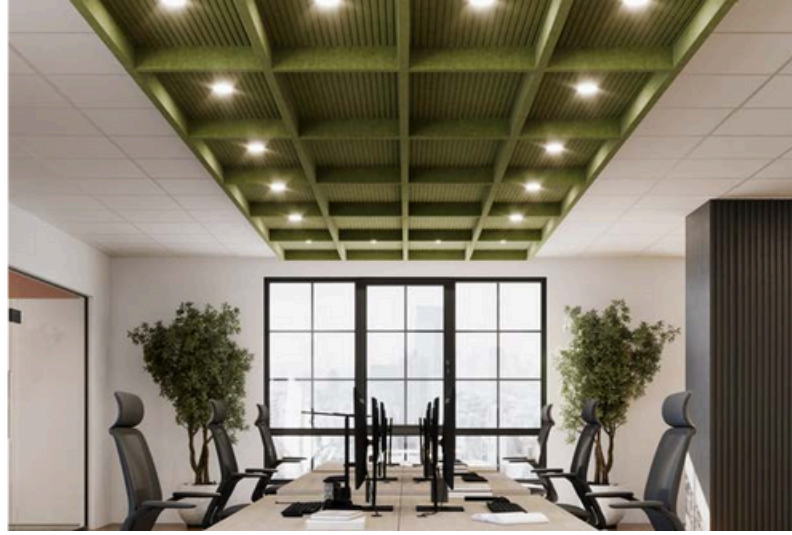
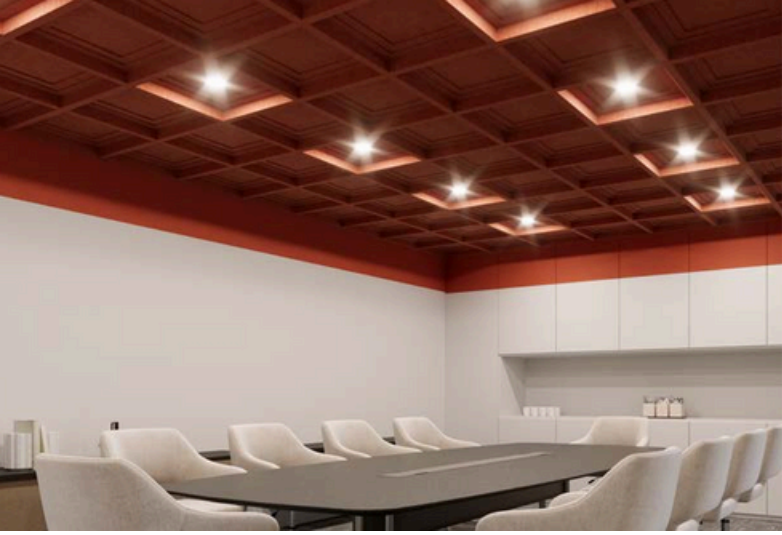
ST-B40 30

ST-B4060

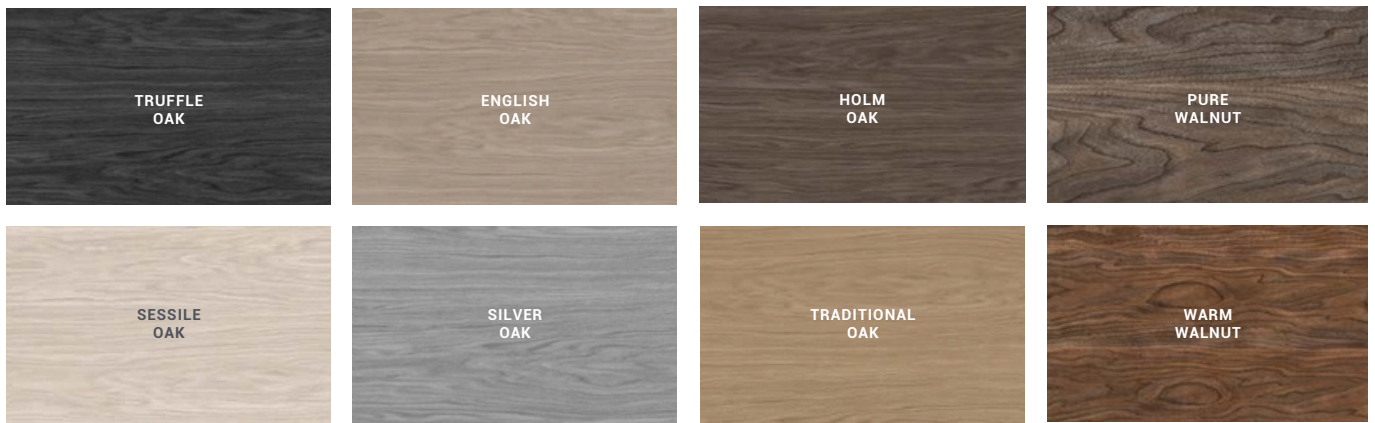
ST-B 40100

ST-B401500





SENSE WOODGRAIN FINISHES*



ÖRA COLOURS*



REJUVENATE PALETTE



REFINE PALETTE



REFRESH PALETTE



* Please include felt colour when ordering.



Declare.

Öra
Allsfär

Final Assembly: Watford, United Kingdom
Life Expectancy: 25 Year(s)
End of Life Options: Recyclable (100%)

Ingredients:
Polyethylene Terephthalate; C. I. Pigment Blue 15; Aluminum hydroxide; Octadecanoic acid, sodium salt

Living Building Challenge Criteria:

I-13 Red List:

<input checked="" type="checkbox"/> LBC Red List Free	% Disclosed: 100% at 100ppm
<input type="checkbox"/> LBC Red List Approved	VOC Content: Not Applicable
<input type="checkbox"/> Declared	

I-10 Interior Performance: Not Compliant
I-14 Responsible Sourcing: Not Applicable

ALL-0002
EXP. 01 JUL. 2026
Original Issue Date: 2025

FOR MORE INFORMATION ON LABEL ACCURACY
INTERNATIONAL LIVING FUTURE INSTITUTE™ living-future.org/declare

Care Instructions

Our products are extremely durable and require little attention to maintain their good looks. Light dusting on a regular basis will prevent dust build up and most marks can be cleaned with a mild detergent solution followed by rinsing and blotting. Stains should be dealt with according to the chart below.

Before carrying out a proposed cleaning method, apply to a concealed section to ensure it will not affect the product or adhesive. Avoid cleaning methods that create severe abrasion. NB: Solvent and mineral based cleaners should be used sparingly to avoid possible degradation of the adhesive adhering the product to the substrate.

Professional Cleaning Methods

Stain	Treatment Guide
Blood	A, C
Burn/Scorch Mark	K
Chewing Gum	I, B, D, C
Chocolate	B, D, C
Cooking Oils	B, D, C
Crayon/Colour Markers	B, D, C
Drinks	A, C
Dust/Dirt	Vacuum, then J or C
Excrement	B, C
Grass	C
Grease	B, D, C
Ink (ballpoint)	D, E
Ink (fountain)	A, C
Lipstick	B, E, C, D
Mildew	C
Milk	A, E
Mud	B, C
Nail Polish	A, G
Oil	B, D, C
Paint (water based)	A, F, C
Paint (oil based)	A, H, D, C
Sauces	B, C, D
Shoe Polish	B, C, D
Urine	A, C
Vomit	A, C, D
Wine	A, Add Salt, C

Key

- A** Mop up excess as soon as possible with a sponge or cloth.
- B** Remove surplus with a knife edge or appropriate instrument.
- C** Sponge with a solution of carpet shampoo working from well outside the stain in a circular motion towards the centre (this avoids spreading the stain). Sponge afterwards with clean warm water and mop excess moisture with a clean dry cloth or sponge. Allow to dry then brush gently with a soft brush. If any stain remains, sponge with a solution of one part household bleach to six parts clear water. Thoroughly rinse after treatment.
- D** Lightly sponge with household dry cleaning **fluid** and blot. Apply sparingly, as the substance may have an adverse effect on the adhesive.
- E** Sponge with methylated spirits and blot dry.
- F** Lubricate the stain with glycerine or petroleum jelly.
- G** Apply nail polish remover. The nail polish remover should not include lanolin or be of a greasy nature.
- H** Sponge with turpentine (or substitute).
- I** Freeze with ice cubes and scrape away while cold.
- J** Clean with regular extractive carpet cleaner (if possible).
- K** Use circular cutter and remove damaged portion. Re-glue new piece into place.

Please contact us for a detailed installation guide.

Showroom: 14 Baltic Street East, London, ECIY 0UJ

Head Office and Factory: Aspect Gate, 1 Olds Approach, Watford, WD18 9RF

www.allsfar.com • +44 (0)20 3889 9888 • hello@allsfar.com

