



## ACOUSTIC SURFACES

### Öra Plain

Acoustic wall surfaces

Öra Plain is an ideal solution for introducing big, bold elements of colour to any space and comes in a range of vibrant, nature inspired colours to compliment your colour scheme, reflect client branding and match soft furnishings.



**Declare.**

**Öra**  
**Allsfär**

**Final Assembly:** Watford, United Kingdom  
**Life Expectancy:** 25 Year(s)  
**End of Life Options:** Recyclable (100%)

**Ingredients:**  
Polyethylene Terephthalate; C. I. Pigment Blue 15; Aluminum hydroxide; Octadecanoic acid, sodium salt

**Living Building Challenge Criteria:**

**I-13 Red List:**  
 LBC Red List Free      % Disclosed: 100% at 100ppm  
 LBC Red List Approved      VDC Content: Not Applicable  
 Declared

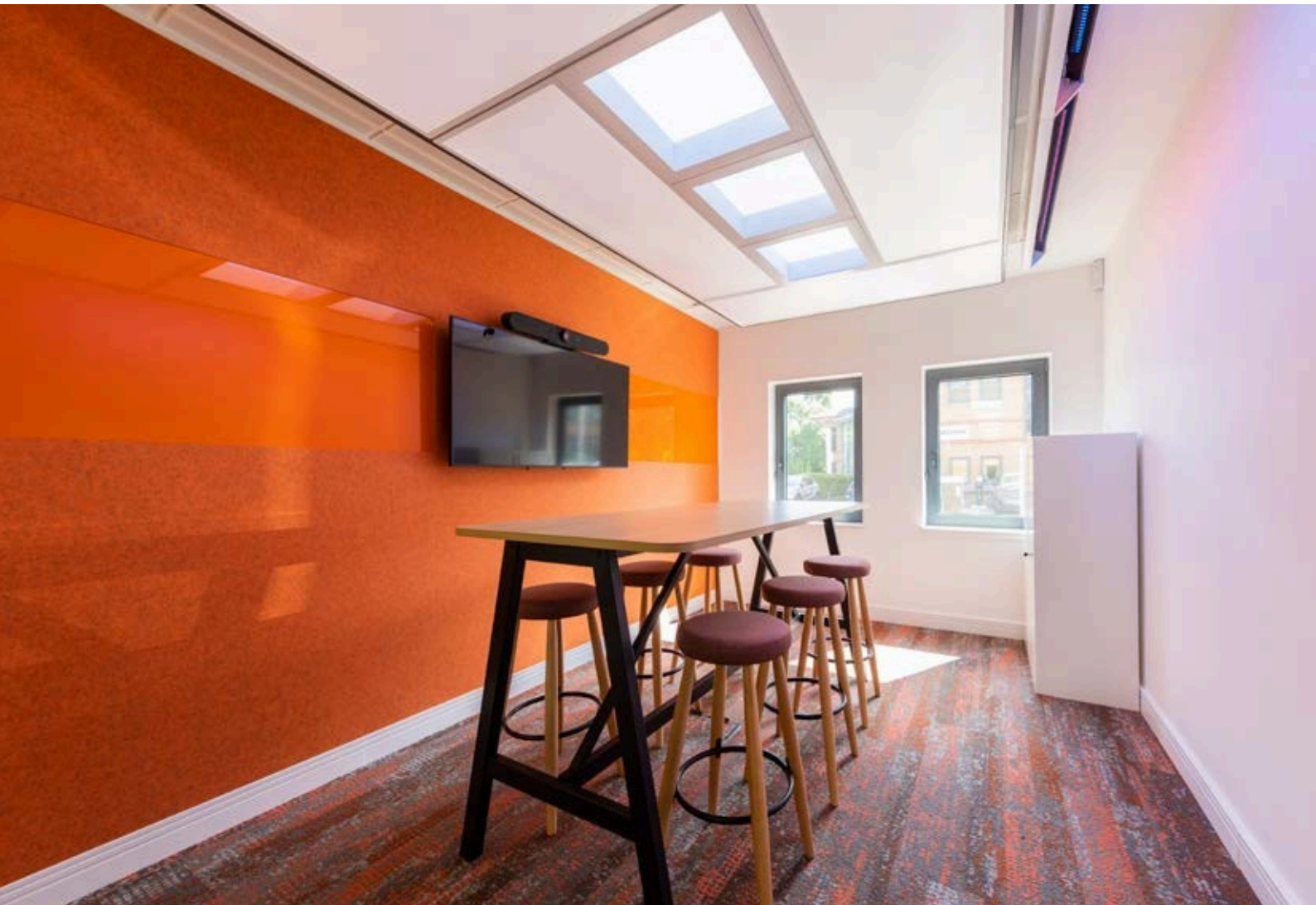
**I-10 Interior Performance:** Not Compliant  
**I-14 Responsible Sourcing:** Not Applicable

ALL-0002  
EXP: 01 JUL 2026  
Original Issue Date: 2025

INTERNATIONAL LIVING FUTURE INSTITUTE™ [living-future.org/declare](http://living-future.org/declare)

## FEATURES

- ▶ Available in 12mm and 24mm thickness
- ▶ Plain panels 2440mm x 1220mm. Bespoke panels 2400mm x 1200mm
- ▶ Made using GRS-certified fibres containing 99% recycled content
- ▶ Noise Reducing Co-efficient (NRC) 0.45
- ▶ Different mounting options available to increase NRC rating
- ▶ Manufacturer's 5 year guarantee
- ▶ Available in a range of vibrant modern colours
- ▶ Can be cut to any shape and size
- ▶ Cost-effective, creative way to manage acoustics without compromising on visual impact
- ▶ Bespoke printing offers the ultimate option for personalisation in noise management
- ▶ Not affected by moisture, mould or mildew
- ▶ No formaldehyde binders
- ▶ Low VOCs
- ▶ LBC Red List Free
- ▶ Easy to install with contact adhesive
- ▶ EN 13501-1:2018-B, s1, d0; ASTM E84 -16 - Class A
- ▶ BIM/Revit files available to download from [www.allsfar.com](http://www.allsfar.com)
- ▶ Pinnable surface





## Öra Plain

Wecancut,print,laminate and create a range of different finishes and sizes with Öra Plain

CODE	DESCRIPTION	DIMENSIONS (mm)
ORA12*	Öra Plain 12mm	1220W x 2440H x 12
ORA24*	Öra Plain 24mm	1220W x 2440H x 24

\* Please include colour name in order description.

Processed panels will be trimmed square 1200mmW x 2400mmH.

### ÖRA COLOURS\*

CARDINAL RED	ROBIN RED FLECK	ORIOLE ORANGE	ORIOLE ORANGE FLECK	FLAMINGO PINK	CHAFFINCH CORAL	SISKIN YELLOW	CANARY YELLOW	CANARY YELLOW FLECK	LARK MUSTARD FLECK
WOODPECKER GREEN	WOODPECKER GREEN FLECK	GOLDCREST GREEN FLECK	TURACO OLIVE GREEN	WARBLER SAGE GREEN	PEACOCK TEAL FLECK	MALLARD TEAL	SWALLOW DARK BLUE	JACARINA BLUE FLECK	SABREWING PURPLE FLECK
KINGFISHER BLUE FLECK	OWL DARK BEIGE FLECK	WHEATEAR BEIGE	WHEATEAR BEIGE FLECK	SANDERLING GREY	DOLLARBIRD BLUE GREY FLECK	HERON GREY	SKUA GREY	RAVEN BLACK	DOVE WHITE

### REJUVENATE PALETTE



### REFINE PALETTE



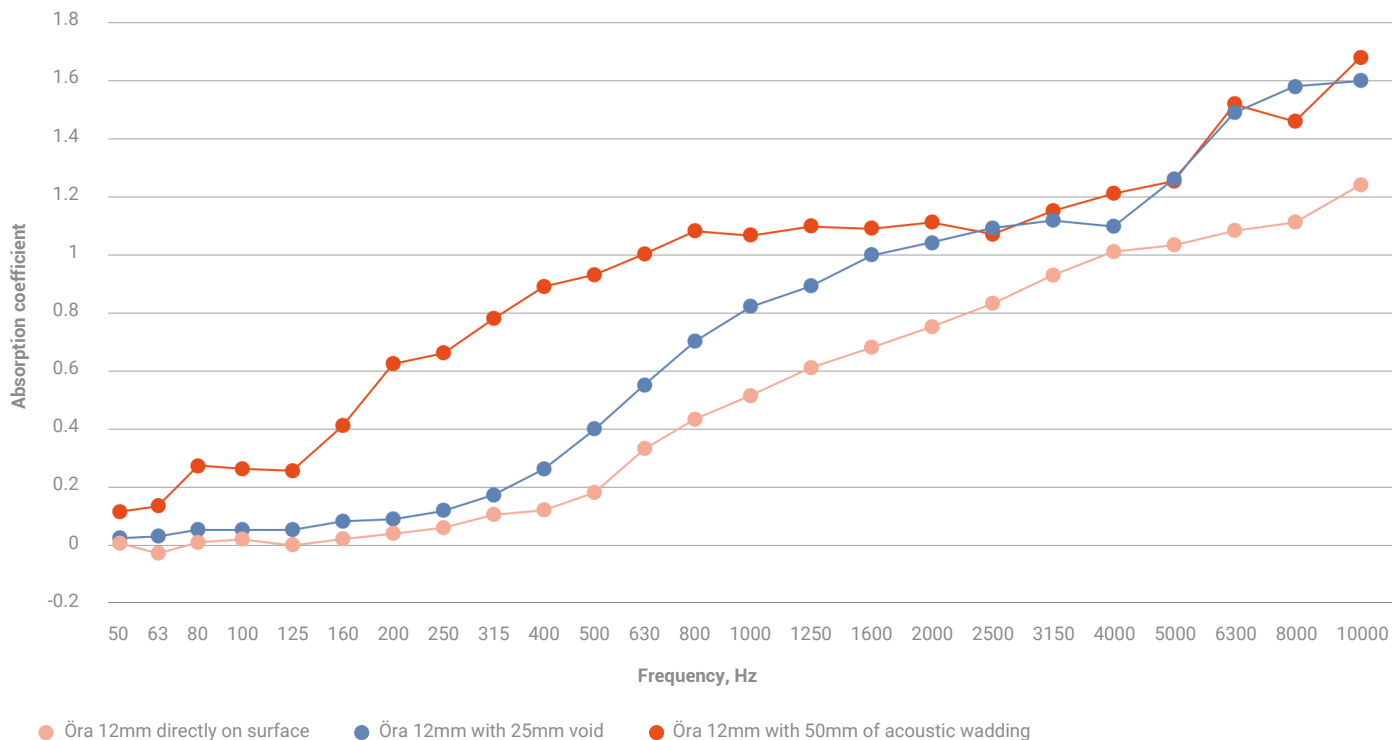
### REFRESH PALETTE



\* Please include felt colour when ordering.

# Accessories and Specification for all Acoustic Surface products

## ÖRA PLAIN 12MM ACCOUSTIC WALL COVERINGS SOUND ABSORPTION COEFFICIENT



## ÖRA PLAIN 12MM ACCOUSTIC WALL COVERINGS SOUND ABSORPTION COEFFICIENT

ÖRA 12MM  
DIRECTLY ON SURFACE

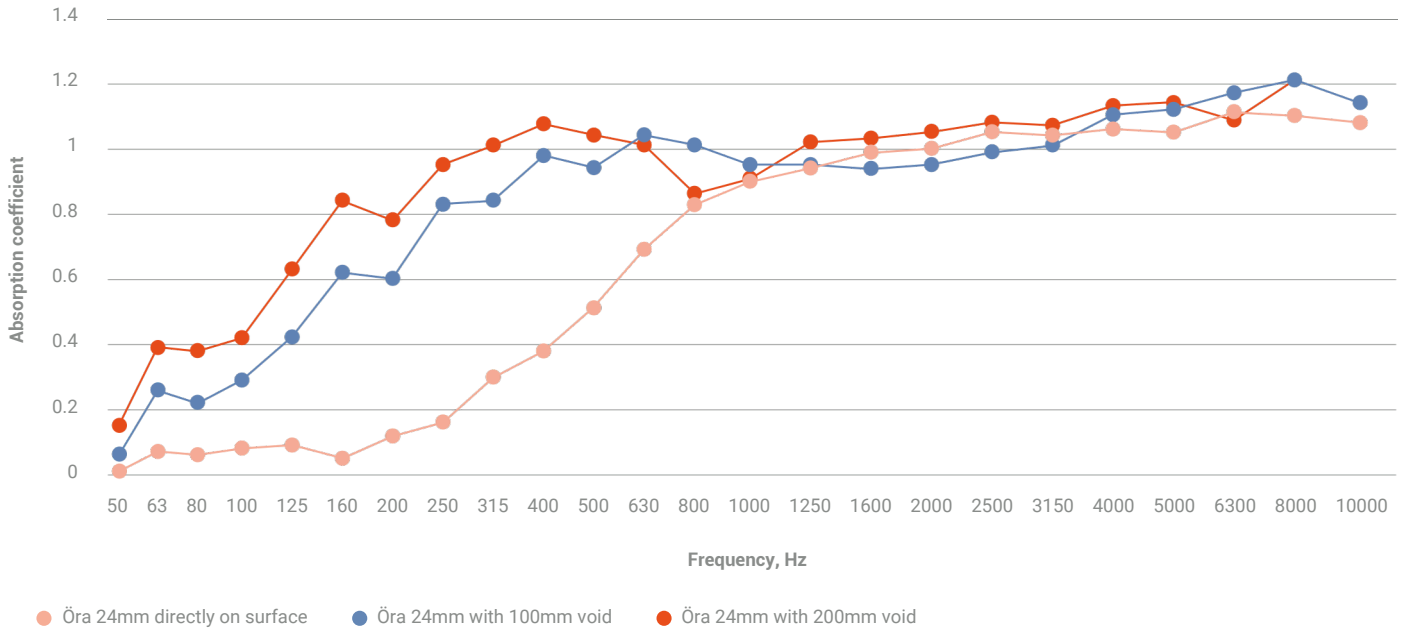
ÖRA 12MM  
WITH 25MM VOID

ÖRA 12MM WITH 50MM  
OF ACOUSTIC WADDING

Freq Hz	Absorb Coeff $\alpha_s$	Absorb Coeff $\alpha_s$	Absorb Coeff $\alpha_s$
50	0.01	0.02	0.11
63	-0.03	0.03	0.13
80	0.01	0.05	0.27
100	0.02	0.05	0.26
125	0.00	0.05	0.25
160	0.02	0.08	0.41
200	0.04	0.09	0.62
250	0.06	0.12	0.66
315	0.10	0.17	0.78
400	0.12	0.26	0.89
500	0.18	0.40	0.93
630	0.33	0.55	1.00
800	0.43	0.70	1.08
1000	0.51	0.82	1.07
1250	0.61	0.89	1.10
1600	0.68	1.00	1.09
2000	0.75	1.04	1.11
2500	0.83	1.09	1.07
3150	0.93	1.12	1.15
4000	1.01	1.10	1.21
5000	1.03	1.26	1.25
6300	1.08	1.49	1.52
8000	1.11	1.58	1.46
10000	1.24	1.60	1.68
NRC	0.40	0.60	0.95
Alpha w			
Class	E	D	A

# Accessories and Specification for all Acoustic Surface products

## ÖRA PLAIN 24MM ACCOUSTIC WALL COVERINGS SOUND ABSORPTION COEFFICIENT



## ÖRA PLAIN 24MM ACCOUSTIC WALL COVERINGS SOUND ABSORPTION COEFFICIENT

Freq Hz	ÖRA 24MM DIRECTLY ON SURFACE	ÖRA 24MM WITH 100MM VOID	ÖRA 24MM WITH 200MM VOID
50	0.01	0.06	0.15
63	0.07	0.26	0.39
80	0.06	0.22	0.38
100	0.08	0.29	0.42
125	0.09	0.42	0.63
160	0.05	0.62	0.84
200	0.12	0.60	0.78
250	0.16	0.83	0.95
315	0.30	0.84	1.01
400	0.38	0.98	1.08
500	0.51	0.94	1.04
630	0.69	1.04	1.01
800	0.83	1.01	0.86
1000	0.90	0.95	0.91
1250	0.94	0.95	1.02
1600	0.99	0.94	1.03
2000	1.00	0.95	1.05
2500	1.05	0.99	1.08
3150	1.04	1.01	1.07
4000	1.06	1.10	1.13
5000	1.05	1.12	1.14
6300	1.11	1.17	1.09
8000	1.10	1.21	1.21
10000	1.08	1.14	1.14
NRC	0.65	0.90	1.00
Alpha w	0.50(MH)	0.95	1.00
Class	D	A	A

## Care Instructions

Our products are extremely durable and require little attention to maintain their good looks. Light dusting on a regular basis will prevent dust build up and most marks can be cleaned with a mild detergent solution followed by rinsing and blotting. Stains should be dealt with according to the chart below.

Before carrying out a proposed cleaning method, apply to a concealed section to ensure it will not affect the product or adhesive. Avoid cleaning methods that create severe abrasion. NB: Solvent and mineral based cleaners should be used sparingly to avoid possible degradation of the adhesive adhering the product to the substrate.

### Professional Cleaning Methods

Stain	Treatment Guide
Blood	A, C
Burn/Scorch Mark	K
Chewing Gum	I, B, D, C
Chocolate	B, D, C
Cooking Oils	B, D, C
Crayon/Colour Markers	B, D, C
Drinks	A, C
Dust/Dirt	Vacuum, then J or C
Excrement	B, C
Grass	C
Grease	B, D, C
Ink (ballpoint)	D, E
Ink (fountain)	A, C
Lipstick	B, E, C, D
Mildew	C
Milk	A, E
Mud	B, C
Nail Polish	A, G
Oil	B, D, C
Paint (water based)	A, F, C
Paint (oil based)	A, H, D, C
Sauces	B, C, D
Shoe Polish	B, C, D
Urine	A, C
Vomit	A, C, D
Wine	A, Add Salt, C

### Key

- A** Mop up excess as soon as possible with a sponge or cloth.
- B** Remove surplus with a knife edge or appropriate instrument.
- C** Sponge with a solution of carpet shampoo working from well outside the stain in a circular motion towards the centre (this avoids spreading the stain). Sponge afterwards with clean warm water and mop excess moisture with a clean dry cloth or sponge. Allow to dry then brush gently with a soft brush. If any stain remains, sponge with a solution of one part household bleach to six parts clear water. Thoroughly rinse after treatment.
- D** Lightly sponge with household dry cleaning fluid and blot. Apply sparingly, as the substance may have an adverse effect on the adhesive.
- E** Sponge with methylated spirits and blot dry.
- F** Lubricate the stain with glycerine or petroleum jelly.
- G** Apply nail polish remover. The nail polish remover should not include lanolin or be of a greasy nature.
- H** Sponge with turpentine (or substitute).
- I** Freeze with ice cubes and scrape away while cold.
- J** Clean with regular extractive carpet cleaner (if possible).
- K** Use circular cutter and remove damaged portion. Re-glue new piece into place.

Please contact us for a detailed installation guide.

Showroom: 14 Baltic Street East, London, ECIY 0UJ

Head Office and Factory: Aspect Gate, 1 Olds Approach, Watford, WD18 9RF

www.allsfar.com • +44 (0)20 3889 9888 • hello@allsfar.com



**ALLSFÄR**