



ACOUSTIC CEILINGS

BreezeCurve **Curved acoustic ceiling baffles**

BreezeCurve is a truly unique product in terms of acoustic ceiling solutions. Designed in-house, BreezeCurve provides architects, interior designers, and specifiers with the ultimate option in terms of creative acoustic solutions for ceilings. The ability to install bespoke curved ceiling baffles to a space will not only provide a stunning statement ceiling but also help create calm throughout. BreezeCurve baffles are available in a range of nature-inspired colours to match scheme colour palettes, soft furnishings and reflect client branding. The option of bespoke sizes and bespoke curves will create something visually exciting and totally unique.

FEATURES

- ▶ Unique curved acoustic ceiling baffles
- ▶ Totally bespoke design options available
- ▶ Ideal for creating a visual statement
- ▶ Available in over 40+ nature inspired colours
- ▶ Designed and manufactured in the UK
- ▶ Made using GRS-certified fibres containing 99% recycled content
- ▶ Innovative way to manage acoustics and create calm
- ▶ No formaldehyde binders
- ▶ Low VOCs
- ▶ Not affected by moisture mould or mildew
- ▶ EN 13501-1:2018-B, s1, d0; ASTM E84 -16 - Class A



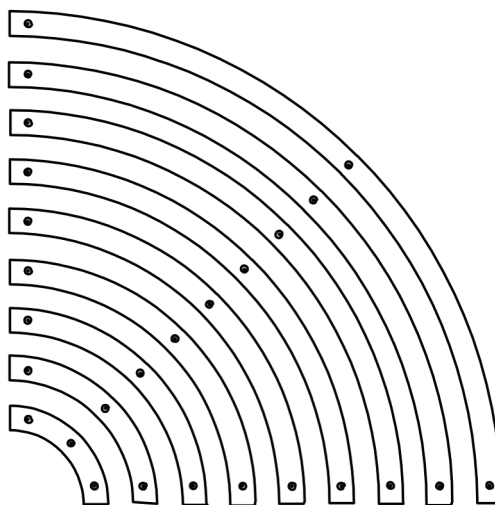
BreezeCurve

Available in all standard Öra colours. Not Available in Woodgrain/BreezeSense finishes.

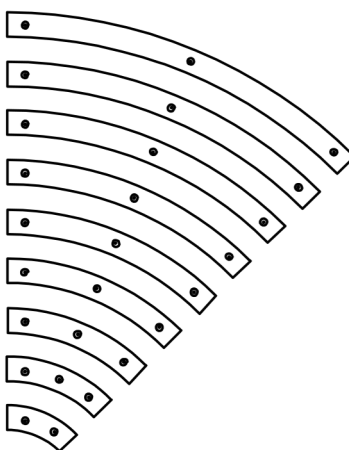
Suspension system fixings available separately using Fixing Method A or B (Please see page 98-99 for installation options)

Code **Outside Diameter (mm)**

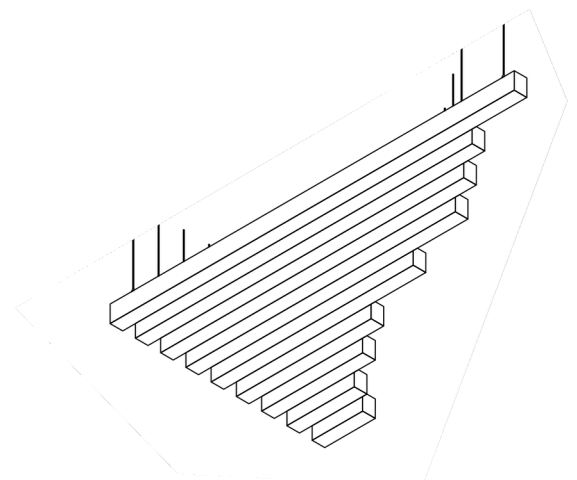
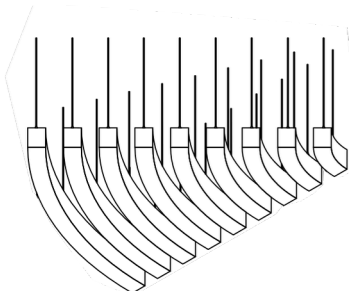
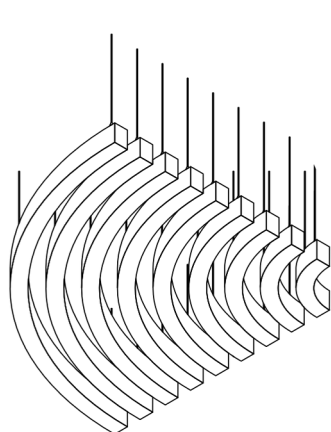
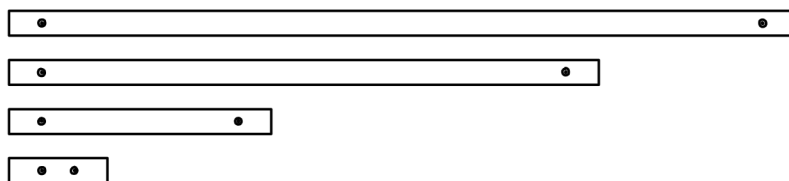
- BREC 75-Q3000-100
- BREC 75-Q2700-100
- BREC 75-Q2400-100
- BREC 75-Q2100-100
- BREC 75-Q1800-100
- BREC 75-Q1500-100
- BREC 75-Q1200-100
- BREC 75-Q900-100
- BREC 75-Q600-100

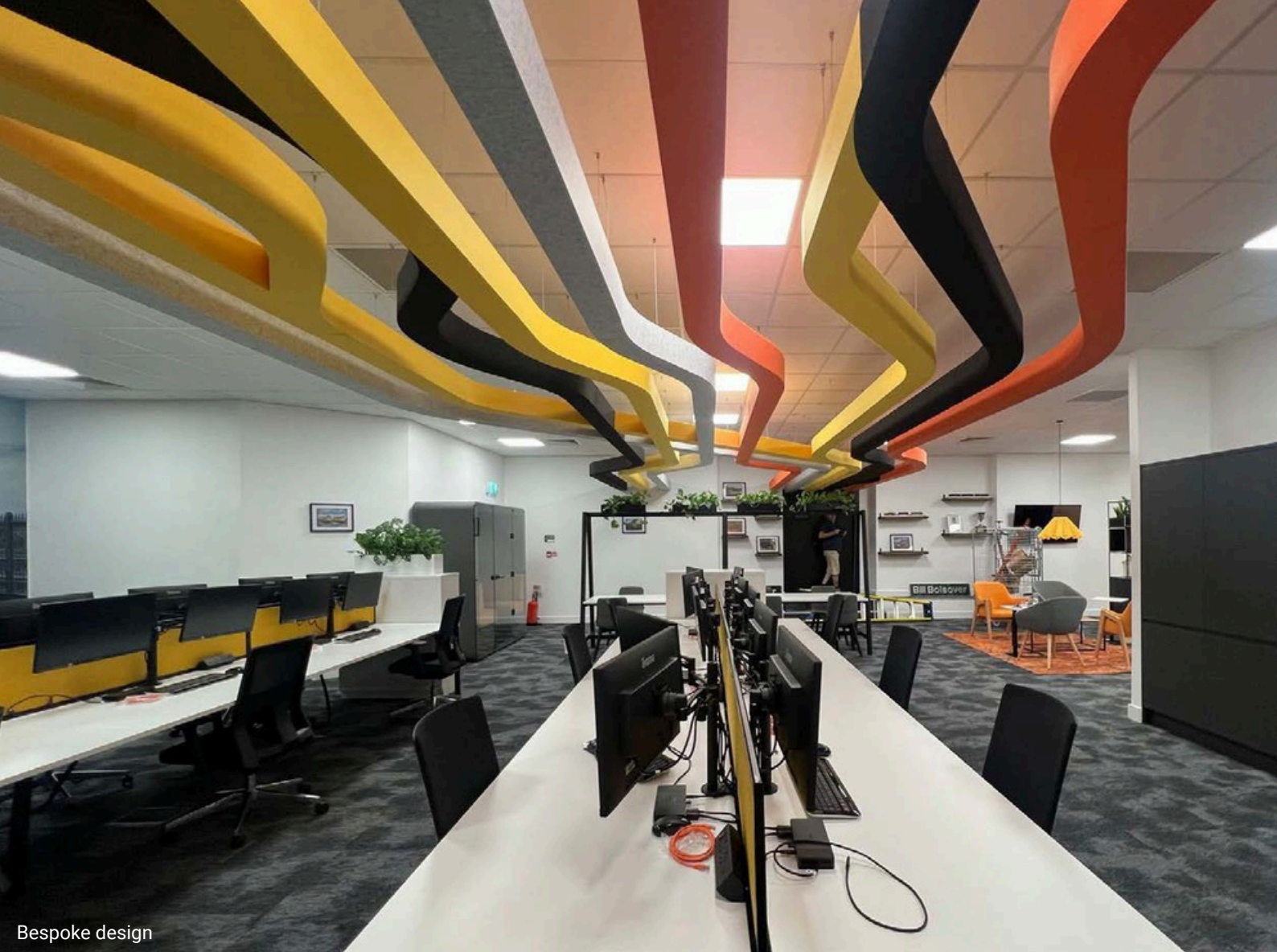


- BREC 75-E3000-100
- BREC 75-E2700-100
- BREC 75-E2400-100
- BREC 75-E2100-100
- BREC 75-E1800-100
- BREC 75-E1500-100
- BREC 75-E1200-100
- BREC 75-E900-100
- BREC 75-E600-100



- BREC 75-ST2400-100
- BREC 75-ST1200-100
- BREC 75-ST600-100
- BREC 75-ST300-100





Bespoke design

ÖRA COLOURS*

CARDINAL RED	ROBIN RED FLECK	ORIOLE ORANGE	ORIOLE ORANGE FLECK	FLAMINGO PINK	CHAFFINCH CORAL	SISKIN YELLOW	CANARY YELLOW	CANARY YELLOW FLECK	LARK MUSTARD FLECK
WOODPECKER GREEN	WOODPECKER GREEN FLECK	GOLDCREST GREEN FLECK	TURACO OLIVE GREEN	WARBLER SAGE GREEN	PEACOCK TEAL FLECK	MALLARD TEAL	SWALLOW DARK BLUE	JACARINA BLUE FLECK	SABREWING PURPLE FLECK
KINGFISHER BLUE FLECK	OWL DARK BEIGE FLECK	WHEATEAR BEIGE	WHEATEAR BEIGE FLECK	SANDERLING GREY	DOLLARBIRD BLUE GREY FLECK	HERON GREY	SKUA GREY	RAVEN BLACK	DOVE WHITE

REJUVENATE PALETTE

HARVEST	MOSS	RIVER	TERRACOTTA	BLUSH
---------	------	-------	------------	-------

REFINE PALETTE

PEBBLE	SAND	DUSTY ORCHID	ASH	COSSET
--------	------	--------------	-----	--------

REFRESH PALETTE

OCEAN	FOREST	HAZE	LAGOON	HONEYDEW
-------	--------	------	--------	----------

* Please include felt colour when ordering.



Declare.

Breeze
Alisfär

Final Assembly: Watford, United Kingdom
Life Expectancy: 25 Year(s)
End of Life Options: Salvageable/Reusable in its Entirety,
Recyclable (100%)

Ingredients:
Polyethylene Terephthalate; Aluminum alloy, C. I. Pigment Blue 15; Aluminum hydroxide; Octadecanoic acid, sodium salt

Living Building Challenge Criteria:

I-13 Red List:	
<input checked="" type="checkbox"/> LBC Red List Free	% Disclosed: 100% at 100ppm
<input type="checkbox"/> LBC Red List Approved	VOC Content: Not Applicable
<input type="checkbox"/> Declared	
I-10 Interior Performance: Not Compliant	
I-14 Responsible Sourcing: Not Applicable	

ALL-0003
EXP. 01 JUL 2026
Original Issue Date: 2025

MANUFACTURED RESPONSIBLY FOR LABEL ACCURACY
INTERNATIONAL LIVING FUTURE INSTITUTE™ living-future.org/declare

Care Instructions

Our products are extremely durable and require little attention to maintain their good looks. Light dusting on a regular basis will prevent dust build up and most marks can be cleaned with a mild detergent solution followed by rinsing and blotting. Stains should be dealt with according to the chart below.

Before carrying out a proposed cleaning method, apply to a concealed section to ensure it will not affect the product or adhesive. Avoid cleaning methods that create severe abrasion. NB: Solvent and mineral based cleaners should be used sparingly to avoid possible degradation of the adhesive adhering the product to the substrate.

Professional Cleaning Methods

Stain	Treatment Guide
Blood	A, C
Burn/Scorch Mark	K
Chewing Gum	I, B, D, C
Chocolate	B, D, C
Cooking Oils	B, D, C
Crayon/Colour Markers	B, D, C
Drinks	A, C
Dust/Dirt	Vacuum, then J or C
Excrement	B, C
Grass	C
Grease	B, D, C
Ink (ballpoint)	D, E
Ink (fountain)	A, C
Lipstick	B, E, C, D
Mildew	C
Milk	A, E
Mud	B, C
Nail Polish	A, G
Oil	B, D, C
Paint (water based)	A, F, C
Paint (oil based)	A, H, D, C
Sauces	B, C, D
Shoe Polish	B, C, D
Urine	A, C
Vomit	A, C, D
Wine	A, Add Salt, C

Key

- A** Mop up excess as soon as possible with a sponge or cloth.
- B** Remove surplus with a knife edge or appropriate instrument.
- C** Sponge with a solution of carpet shampoo working from well outside the stain in a circular motion towards the centre (this avoids spreading the stain). Sponge afterwards with clean warm water and mop excess moisture with a clean dry cloth or sponge. Allow to dry then brush gently with a soft brush. If any stain remains, sponge with a solution of one part household bleach to six parts clear water. Thoroughly rinse after treatment.
- D** Lightly sponge with household dry cleaning fluid and blot. Apply sparingly, as the substance may have an adverse effect on the adhesive.
- E** Sponge with methylated spirits and blot dry.
- F** Lubricate the stain with glycerine or petroleum jelly.
- G** Apply nail polish remover. The nail polish remover should not include lanolin or be of a greasy nature.
- H** Sponge with turpentine (or substitute).
- I** Freeze with ice cubes and scrape away while cold.
- J** Clean with regular extractive carpet cleaner (if possible).
- K** Use circular cutter and remove damaged portion. Re-glue new piece into place.

Please contact us for a detailed installation guide.

Showroom: 14 Baltic Street East, London, ECIY 0UJ

Head Office and Factory: Aspect Gate, 1 Olds Approach, Watford, WD18 9RF

www.allsfar.com • +44 (0)20 3889 9888 • hello@allsfar.com

