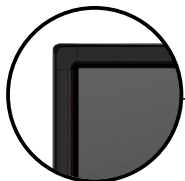


# EL65+ Touchscreen

The iBT EL65+ is the perfect touchscreen for users who want the essential features.

A 1080p HD 65" screen with 10 point touch, anti-glare, MoHs 7 toughened glass and 15w speakers. Use the built in Android or plug into any standard Windows laptop or PC and you are ready to go. An optional PC slot is also available.



25mm slim bezel giving your environment a sleek modern look



Built in Android familiar, just like a giant tablet

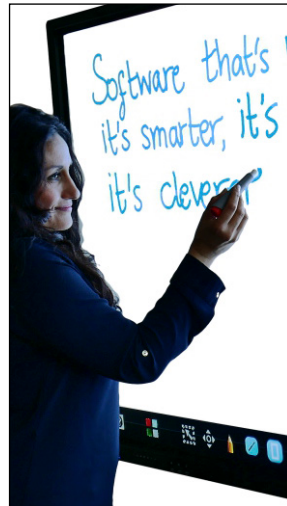


Front USB Ports to make it easier for you to connect to



### Multitude of connection ports

Connect your devices to the EL65+ and share content with the room, includes VGA, RS232, HDMI, USB and more.



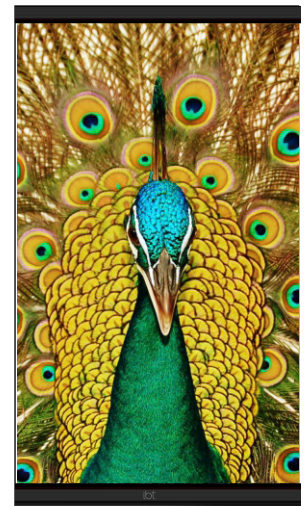
### Stylus and finger responsive

Use your fingers, the included pen or any stylus type of object to interact with the touchscreen (even a carrot will work!). No special cleaning required, just wipe with a cloth.



### Super tough, Mohs 7 hardness

Durable and strong, the EL65+ comes with Mohs7 screen hardness, (diamond strength) perfect for multi-user environments, interact without worry of damage.



### 1080p Full HD screen resolution

Watch and read content in high quality with the anti-glare 1080p HD screen. Keep your audience engaged with your content without needing to darken the room.

# Specifications

Display	
Screen Type	TFT AUO 16:9
Resolution	1920 x 1080 - Full HD
Diagonal Display Area	65"
Brightness	350 cd/m <sup>2</sup>
Contrast	4000:1
Response Time	8 ms
Number of Colours	1.07B (10-bit)
View Angle	178/178 (H/V)
Service Life	>30,000 hrs
Dimensions	1501(L) x 890(H) x 115(W) mm
Box Dimensions	1637(L) x 1067(H) x 235(W) mm
Net Weight	54Kg
Gross Weight	65Kg

Touch System	
Sensing Type	Infrared Transmission (ten-point)
Response Time	<10ms(typ)
Response Area	>= Φ 3ms
Refreshing Frequency	60Hz
Draft Pen	1
Output Coordinates	32767X32767
Communication Mode	Full Speed USB
Writing Facility	Any Opaque Object that > 5mm
Writing Screen	Mohs hardness of 7


Interface System	
Front USB Ports: Android x 2, Windows x 1	
Top USB Port (perfect for webcam): 1	
HDMI	2
Display Port	1
VGA Input (D Sub)	3
VGA Audio Input	3
USB 2.0	1
USB 3.0	6
VGA Output (D Sub)	1
Earphone Jack	1
RS232c	1
SPDIF Output (Optical/Coxial)	1
LAN (RJ45)	1
WAN (RJ45)	1
USB Touch	2
AV In: Composite Video/ Composite Audio Input Mini Jack	1

Android	
Android 5.0.1 (not upgradeable)	
Arm Cortex A53 (1.5G)	
Mali450x4	
2GB RAM	
16GB ROM	

Power & Sound	
Integrated Speakers	2 x 15W
Power Requirements	110v-240v AC 50/60Hz
Max Power Consumption	260 W
Standby Power Consumption	<0.5 W

Internet	
Built in Wi-Fi (A/B/G/N Router)	

Bezel Colour	
Brushed Aluminium Silver	

Accessories	
Remote Control	
Draft Pen	
HDMI Cable	
VGA Cable	
USB Touch Cable	

Warranty	
3 Years	



## Software

### iFlipChart - interactive whiteboard software

The included iFlipChart software is an easy to use interactive whiteboard - just walk up to the EL65+ and start working straight away.

It comes with

- Different styles of pens
- Shapes tools (and shape recognition)
- Colour pallet
- Ability to work with multiple pages
- Easily import your own content

Plus the option to save your work as an iFlipChart file or image makes sharing content really easy. 2 x licences included. 1 licence is installed onto your EL65+, you can then choose either a second Android or Windows licence that can be installed onto a second device.

Connect your own Windows PC or laptop or add an integrated PC:

Optional PC Module	
i5 Intel CPU	
4GB RAM	
500GB HDD	
Integrated Graphics Card	
The PC module gives you even more connectivity	
Display Port x 1	
HDMI Port x 1	
VGA Out (PC) x 1	
Headphone Jack x 1	
Microphone In x 1	
LAN in (PC) x 1	
USB 3.0 x 2	
USB 2.0 x 4	
Bluetooth	



PC module image for illustration purposes only